

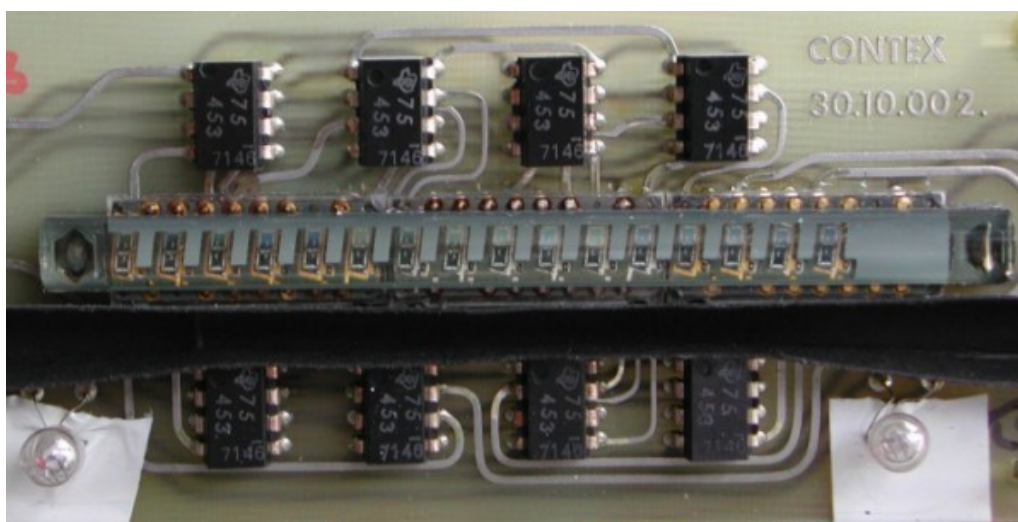
# REX-ROTARY: CONTEX D51

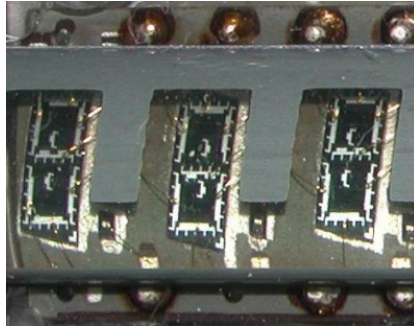
Last updated: 05-jan-2003



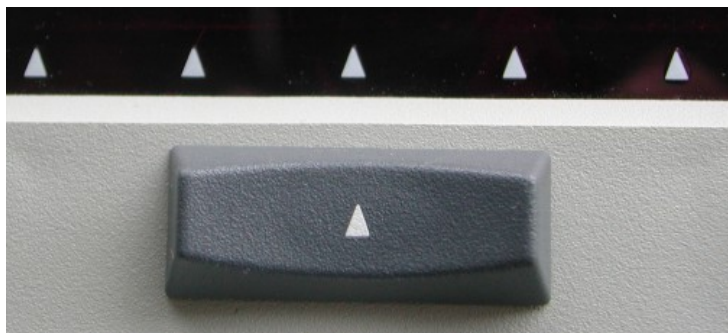
Manufacturer:	A/S BRDR. CARLSEN
Model:	D51
AKA:	CONTEX D51
Year:	1972
Display:	LED-bar (16)
Circuits:	ELECTRONIC ARRAYS (see further on this page)
Dimensions:	215x205x68 mm
Power type:	220V
Origin:	Denmark
S/N:	054000641
Owner:	DEVIDTS Serge
Info:	

The machine has the same functionality as the D31,  
plus four additional keys (on the left).





The D51 uses a LED-bar instead of a Monolithic Nixie-tube ^

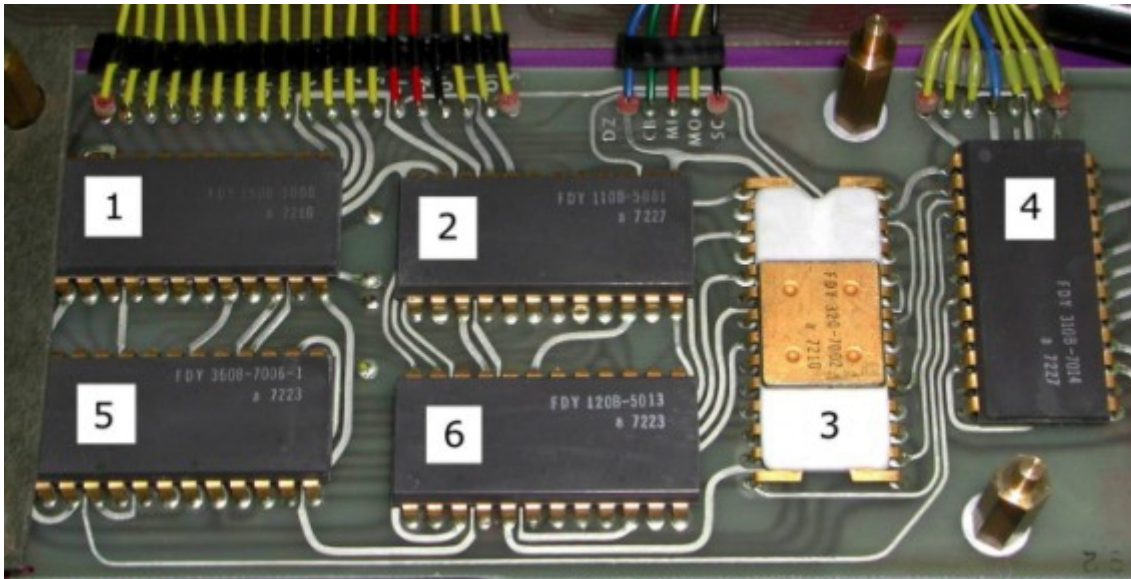


The digit divider ^

This (non-electronic) switch can be placed in three different positions so as to facilitate the reading of multi-digit results.

One of the pointers should always be placed under the decimal point.

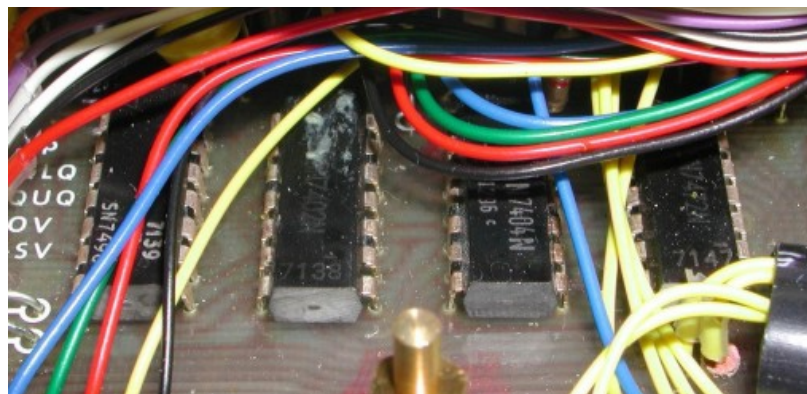
If one is calculating without decimals,  
the digit divider should be placed in its  
left-hand position.



Internals: chips: ^

IC's from ELECTRONIC ARRAYS

- 1: FDY: 150B-5005
- 2: FDY: 110B-5001
- 3: FDY: 320-7002
- 4: FDY: 310B-7014
- 5: FDY: 360B-7006-1
- 6: FDY: 120B-5013



Internals: extra 4 small chips: ^

- 1: TEXAS INSTRUMENTS: SN7490N (Decade Counter).
- 2: TEXAS INSTRUMENTS: SN7402N (NOR Gate).
- 3: TEXAS INSTRUMENTS: SN7404N (HEX Inverter).
- 4: TEXAS INSTRUMENTS: SN7472N (J-K Flip Flop).





Power Supply ^



Keyboard construction ^



Case en dust cover ^



D11 / D31 / D51 instruction manual ^

Auftrag-Nr.	Auftrags-Datum	Lieferschein-Nummer	Lieferschein-Datum	Versand ab Lager	Versand durch	Vertr.-Nr.
560067	28.04.73	28369	25.05.73	BIELEFELD	PKW	105

Artikel-Nr.	Menge Stückzahl	Artikel	Maschinennummer	Einzelpreis DM	Preis pro Einheit	Gesamtpreis DM
109471	1	D 51 CONTEX 054000641 1 TRAGETASCHE FÜR CONTEX D51 GR.		1198,00	1	1.198,00

Detail of the invoice ^  
DM1.198 = app. \$575

Task	How to type	Result
Setting decimals to 4	[C] [CE] 4	0.0000
$1/(4+3)$	4 [+] 3 [:] 1 [x/y] [=]	0.1428
$72-((2+3)*4)$	2 [+] 3 [x] 4 [=] [+>-] [+] 72 [=]	52

Calculating examples ^